

A window film that can change your world!



posica™ kukkiri™ film uses Mitsui Chemicals Inc.'s proprietary dyestuff technology to enhance the clarity and brightness of the view through windows. The film can enhance views of blue sky and clouds, ocean, greeneries, red flowers. Also, it makes food items look more fresh and delicious!

No
film



With
film



posica™ kukkiri™ film features



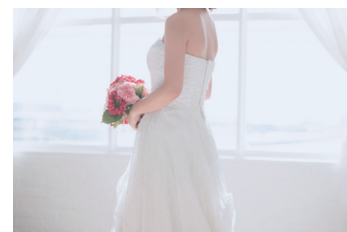
Clear View



Easy Reading



Clarity

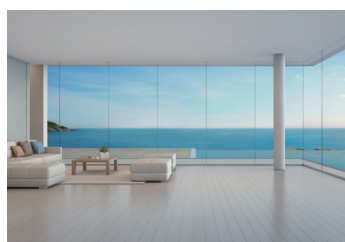


Enhanced Portraits

Application



Offices



Resort Hotels



Display Cases



Tourism, commercial facilities

Function



Anti-shattering

Ensuring safety by preventing glasses from scattering during disasters. Conforms to JIS A 5759



Non-combustible

Approved by The Ministry of Land, Infrastructure, Transport and Tourism as a non-combustible material- Accredited no. NM-3742.



UV rays reduction

Reducing 99% of harmful UV rays that can cause sun damage and color-fading to interior items.



Scratch-resistant coating

The hard-coating surface reduces scratches and damages during and after installation.

Why posica™ kukkiri™ film?

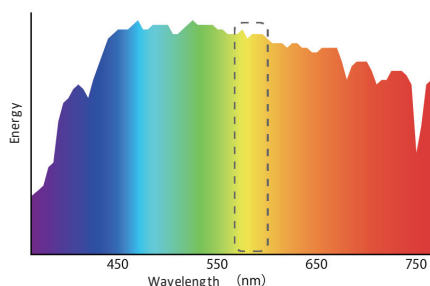


posica™ kukkiri™ film with our polymer technology promises people a better window view without changing natural perception. With this brand name, we wish to bring all the people happiness and joy of life.

How it works?

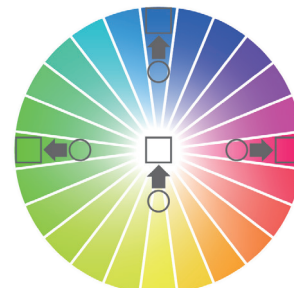
posica™ kukkiri™ film is made of PET material, hard coating layer, adhesive layer, and separator. Mitsui Chemicals Inc.'s proprietary dyestuff material absorbs yellow light (Fig. 1) which results in enhancing the contrast of buildings, and darkening of some colors to make the contrast sharper (Fig. 2). It removes yellowish color in white objects to make it brighter and clearer.

Fig. 1



The spectrum of sunlight and the area blocked by posica™ kukkiri™ film

Fig. 2

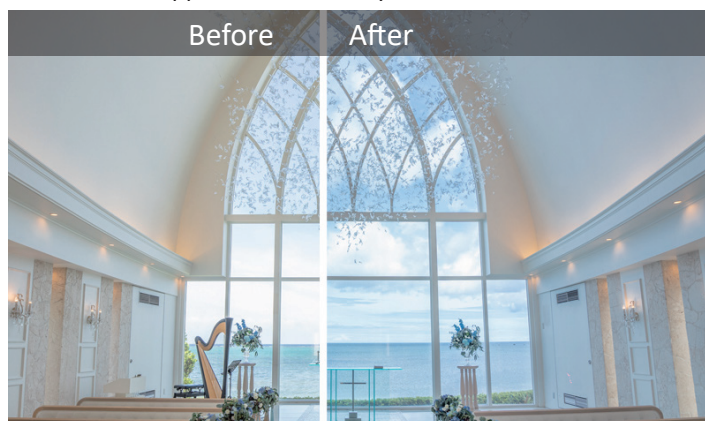


The change of color formation through the film.

○ : No film
□ : With film

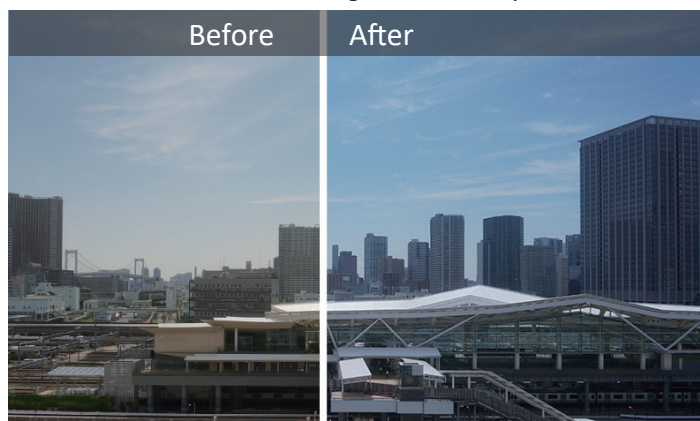
Customer Success Stories

Clouds appear whiter, clarity of the window view



Aquagrace Chapel (Okinawa Watabe Wedding)

Clearer outline of buildings, better clarity in the air



Workplace for "Flexible Life Design Project"
Near Takanawa Gateway Station

Standard size: 1,550 mm x 30 M

Structure

Hard coating layer
PET substrate
Adhesive layer
Separator

Optical properties

Type	Solar radiation transmissivity (%)	Reflectance (%)	Absorbance (%)	Visible light transmissivity (%)	Reflectance (%)	UV transmissivity (%)	585 nm Spectral transmission factor (%)
KBL30	75.3	7.4	17.4	66.0	7.1	< 1	29.5
KBL45	77.6	7.6	14.8	73.9	7.3	< 1	44.8
KBL60	79.4	7.6	13.0	81.0	7.5	< 1	61.5

*Measurement is based on JIS A 5759

- Data represent measured numbers
- posica is a trademark of Tanseisha and Mitsui Chemicals Inc's
- kukkiri is a trademark of Mitsui Chemicals Inc's

Secret of posica™ kukkiri™ film



For sales inquiry

MITSUI CHEMICALS SINGAPORE R&D CENTRE

TEL: +65-6570-5730 ✉ Masahito.Yano@mitsuichemicals.com URL: <https://ap.mitsuichemicals.com/index.htm>



Singapore

Mitsui Chemicals
Asia Pacific, Ltd.

Mitsui Elastomers
Singapore Pte Ltd

Mitsui Chemicals Singapore
R&D Centre Pte. Ltd.

SDC Technologies
Asia Pacific, Pte. Ltd.

Prime Evolve
Singapore Pte. Ltd.